

Benedictus

Two-part Chorus with Optional Descant, Piano, and Optional Handbells (3-4 octaves)

Traditional Latin

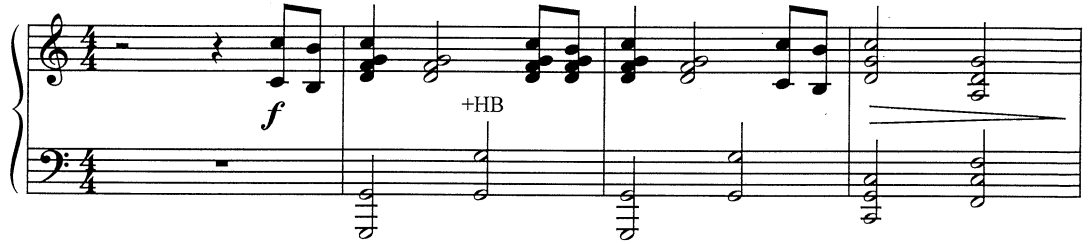
Greg Gilpin

Ranges: Part I Part II Descant



Translation:
 Benedictus qui venit in nomine Domini.
Blessed is he who comes in the name of the Lord.
 Hosanna in excelsis.
Hosanna in the highest.

① Majestically ♩ = ca. 120

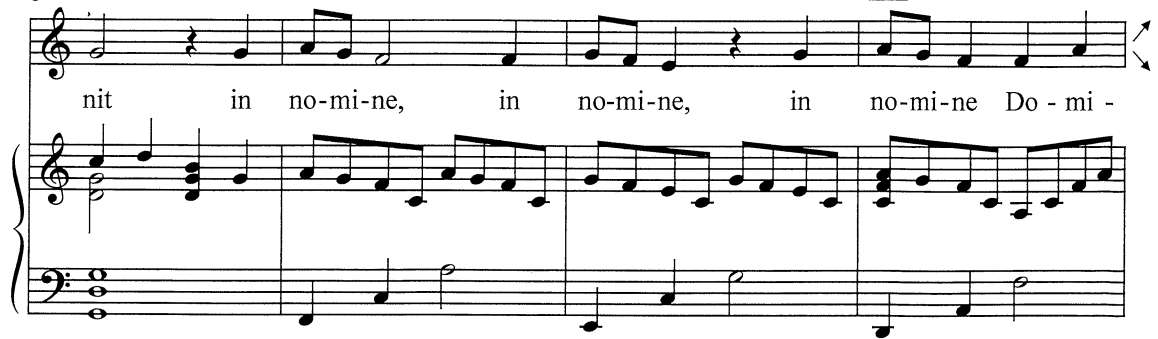


5 All Voices *mf*



9

②



Duration: approx. 2:15

*Handbell part is on pages 10-11.

© 2005 Heritage Music Press, a division of The Lorenz Corporation. All rights reserved. Printed in U.S.A.
 Unauthorized reproduction of this publication is a criminal offense subject to prosecution.

THE CCLI LICENSE DOES NOT GRANT PERMISSION TO PHOTOCOPY THIS MUSIC.

13

I
ni. Be-ne-dic-tus qui ve-nit, be-ne-

II
ni. Be-ne-dic-tus, be-ne-dic-tus,

16

I
dic-tus qui ve-nit in no-mi-ne, in

II
be-ne-dic-tus qui ve-nit in no-mi-ne,

19

I
no-mi-ne, in no-mi-ne Do-mi-ni. Ho-
mp

II
in no-mi-ne Do-mi-ni. Ho-
mp

22

I
san - na in ex - cel - sis. Ho - san - na, Ho -

II
san - na in ex - cel - sis. Ho - san - na, Ho -

mp -HB +HB

25

I
san - na. Ho - san - na in ex - cel - sis. Ho -

II
san - na. Ho - san - na in ex - cel - sis. Ho -

-HB

28

I
san - na in ex - cel - sis.

II
san - na in ex - cel - sis.

(4)

+HB *p* L.H.

32 *p*

I In ex - cel - sis, in ex - cel - sis.

II *p*
Ho - san - na, Ho - san - na, Ho -

35 *mf*

I Ho - san - na,

II *mf*
san - na. Ho - san - na,

39

I Ho - san - na in ex - cel - sis, in ex - cel - sis. Ho - san -

II Ho - san - na in ex - cel - sis, in ex - cel - sis. Ho - san -

43 *f* *rit.* *mf* *a tempo*

I na! Be-ne - dic - tus qui ve - nit, be-ne

II na! Be-ne-dic - tus, be-ne-dic-tus,

f *rit.* *a tempo mf*

f -HB *rit.* +HB *mf a tempo*

47

I dic - tus qui — ve - nit in no-mi-ne, in

II be-ne-dic - tus qui — ve - nit in no-mi-ne,

50 6 *rit.* *f*

I no-mi-ne, in no-mi-ne Do - mi - ni. Be - ne -

II in no-mi-ne Do - mi - ni.

rit. -HB *rit.*

53 Descant (Opt.) *mf*
a tempo

Ho - san - na in ex -

I *a tempo*
 dic - tus qui ve - nit, be - ne - dic - tus qui ve -

II *a tempo f*
 Be - ne - dic - tus, be - ne - dic - tus, be - ne - dic - tus

f a tempo
 +HB

56

cel - sis. Ho - san - na, Ho - san - na

I
 nit in no - mi - ne, in no - mi - ne, in

II
 qui ve - nit in no - mi - ne, in no - mi - ne

59 7

in ex-cel - sis. Ho - san - na,

I no-mi-ne Do - mi - ni. In no-mi-ne, in

II Do - mi - ni. In no-mi-ne,

62

Ho - san - na in ex-cel - sis,

I no-mi-ne, in no-mi-ne Do - mi - ni, in

II in no-mi-ne Do - mi - ni,

65 (Descant ends)

in ex-cel - sis.

I no-mi-ne Do - mi - ni. Be-ne - dic - tus, be-ne -

II Do - mi - ni. Be-ne - dic - tus, be-ne -

mf cresc.

mf cresc.

mf cresc.

68

dic - tus, Ho - san - na!

I dic - tus, Ho - san - na!

II dic - tus, Ho - san - na!

f molto rit.

f molto rit.

f molto rit.

ff